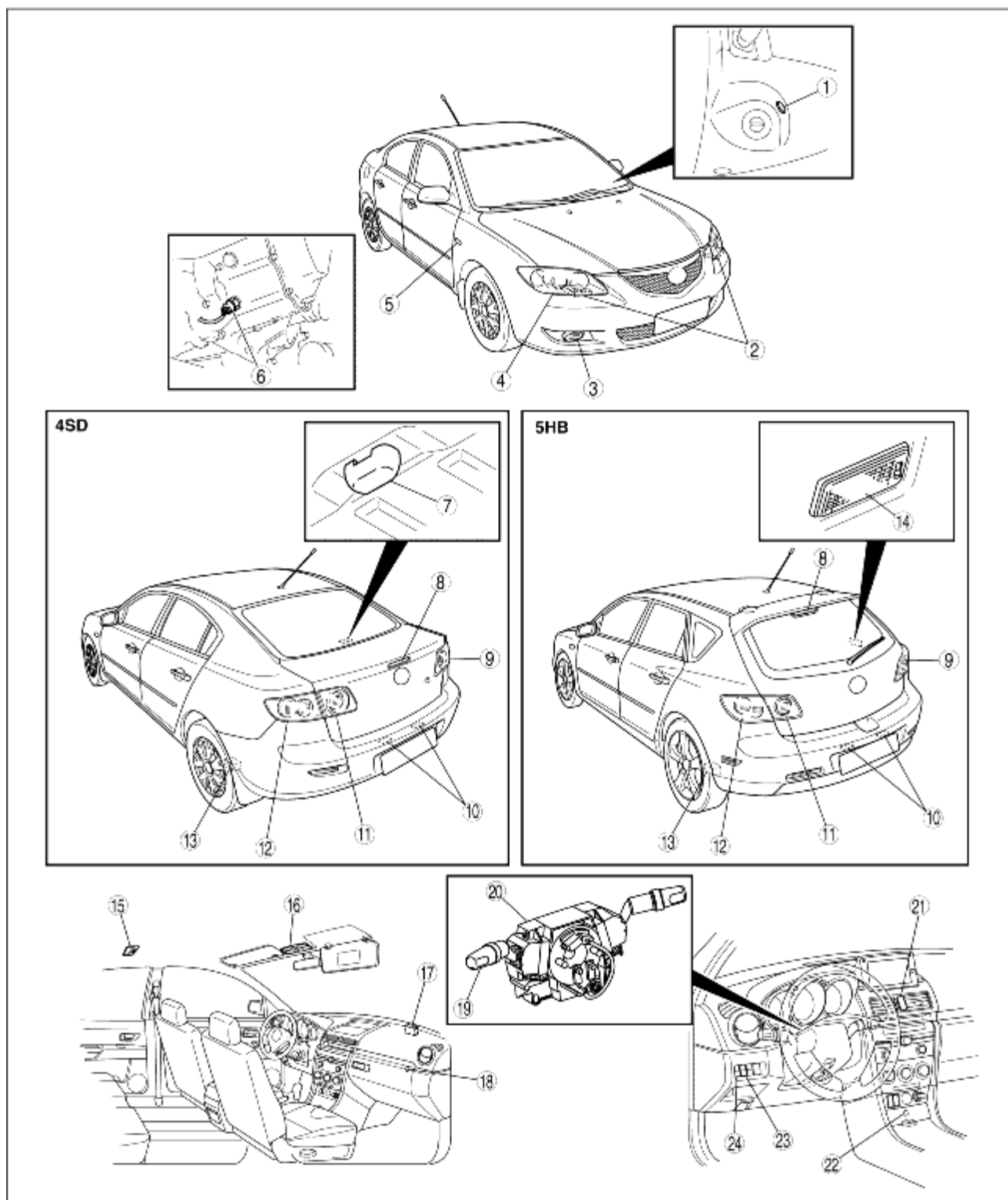


LIGHTING SYSTEMS LOCATION INDEX

B3E091801051W01



B3E0918W101

Ignition key illumination

1	(See IGNITION KEY ILLUMINATION BULB REMOVAL/INSTALLATION.)
2	Discharge headlight control module (See DISCHARGE HEADLIGHT CONTROL MODULE REMOVAL/INSTALLATION.) (See DISCHARGE HEADLIGHT SYSTEM INSPECTION.)
3	Front fog light (See FRONT FOG LIGHT REMOVAL/INSTALLATION.) (See FRONT FOG LIGHT AIMING.) (See FRONT FOG LIGHT BULB REMOVAL/INSTALLATION.)
4	Front combination light (See FRONT COMBINATION LIGHT REMOVAL/INSTALLATION.) (See HEADLIGHT AIMING.) (See HEADLIGHT BULB REMOVAL/INSTALLATION.) (See PARKING LIGHT BULB REMOVAL/INSTALLATION.) (See FRONT TURN LIGHT BULB REMOVAL/INSTALLATION.) (See DISCHARGE HEADLIGHT SERVICE WARNINGS.)
5	Front side turn light (See FRONT SIDE TURN LIGHT REMOVAL/INSTALLATION.)
6	Back-up light switch (MTX) (See BACK-UP LIGHT SWITCH REMOVAL/INSTALLATION.) (See BACK-UP LIGHT SWITCH INSPECTION.)
7	Trunk compartment light (See TRUNK COMPARTMENT LIGHT BULB REMOVAL/INSTALLATION.)
8	High-mount brake light (See HIGH-MOUNT BRAKE LIGHT REMOVAL/INSTALLATION.)
9	Inboard light (See INBOARD LIGHT REMOVAL/INSTALLATION.) (See INBOARD LIGHT BULB REMOVAL/INSTALLATION.)
10	License plate light (See LICENSE PLATE LIGHT REMOVAL/INSTALLATION.)
11	Rear fog light (See INBOARD LIGHT REMOVAL/INSTALLATION.) (See INBOARD LIGHT BULB REMOVAL/INSTALLATION.)
12	Rear combination light (See REAR COMBINATION LIGHT REMOVAL/INSTALLATION.) (See REAR COMBINATION LIGHT BULB REMOVAL/INSTALLATION.)
13	Auto leveling sensor (See AUTO LEVELING SENSOR REMOVAL/INSTALLATION.)
14	Cargo compartment light (See CARGO COMPARTMENT LIGHT REMOVAL/INSTALLATION.) (See CARGO COMPARTMENT LIGHT INSPECTION.)
15	Interior light (See INTERIOR LIGHT REMOVAL/INSTALLATION.) (See INTERIOR LIGHT INSPECTION.)
16	Map light (See MAP LIGHT REMOVAL/INSTALLATION.) (See MAP LIGHT INSPECTION.)
17	Auto leveling control module (See AUTO LEVELING CONTROL MODULE REMOVAL/INSTALLATION.)
18	Glove compartment light (See GLOVE COMPARTMENT LIGHT BULB REMOVAL/INSTALLATION.)
19	Light switch (See LIGHT SWITCH REMOVAL/INSTALLATION.) (See LIGHT SWITCH INSPECTION.) (See FRONT AND REAR FOG LIGHT SWITCH INSPECTION.)
20	Combination switch (See COMBINATION SWITCH REMOVAL/INSTALLATION.) (See COMBINATION SWITCH DISASSEMBLY/ASSEMBLY.)

21	Hazard warning switch (See HAZARD WARNING SWITCH REMOVAL/INSTALLATION.) (See HAZARD WARNING SWITCH INSPECTION.)
22	Ashtray illumination (See ASHTRAY ILLUMINATION BULB REMOVAL/INSTALLATION.)
23	Panel light control switch (See PANEL LIGHT CONTROL SWITCH REMOVAL/INSTALLATION.) (See PANEL LIGHT CONTROL SWITCH INSPECTION.)
24	Headlight leveling switch (See HEADLIGHT LEVELING SWITCH REMOVAL/INSTALLATION.) (See HEADLIGHT LEVELING SWITCH INSPECTION.)